

EMPLAZAMIENTO

ESCALA 1:1000

SUP. POLIGONO A-B-C-D-E-A = 1.321,00 m²

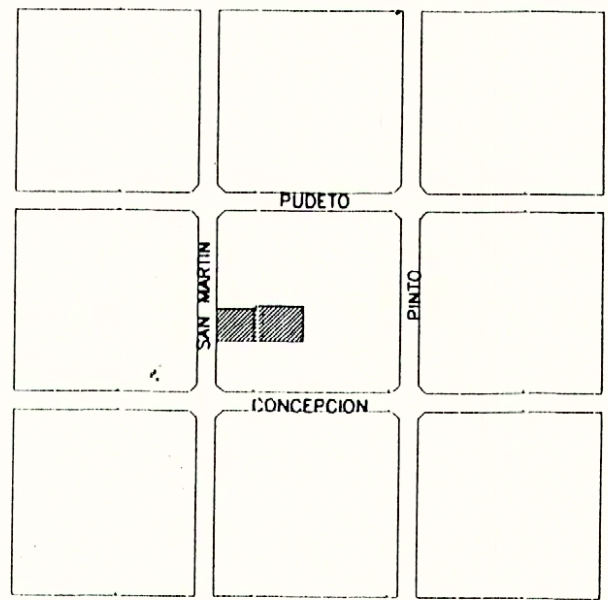
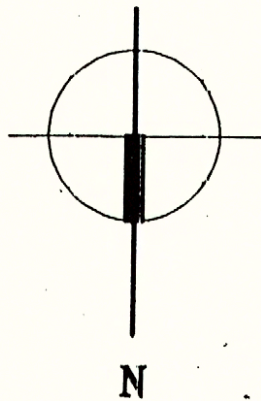
PLANO OFICIAL



MONUMENTO HISTÓRICO:
CASA COLONIAL DE QUILLOTA
 Calle San Martín 336

Límites: Polígono A-B-C-D-E-A



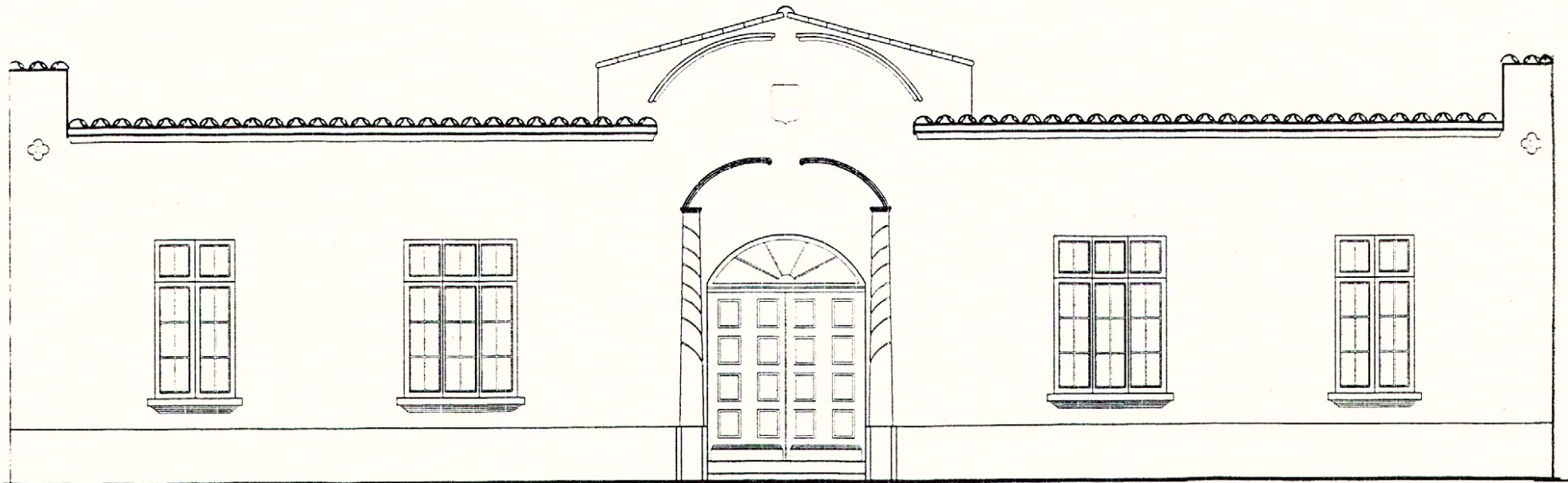


PLANO UBICACION
ESCALA 1:5000



PLANO OFICIAL

PLANO OFICIAL



ELEVACION FRONTAL

ESCALA 1:50