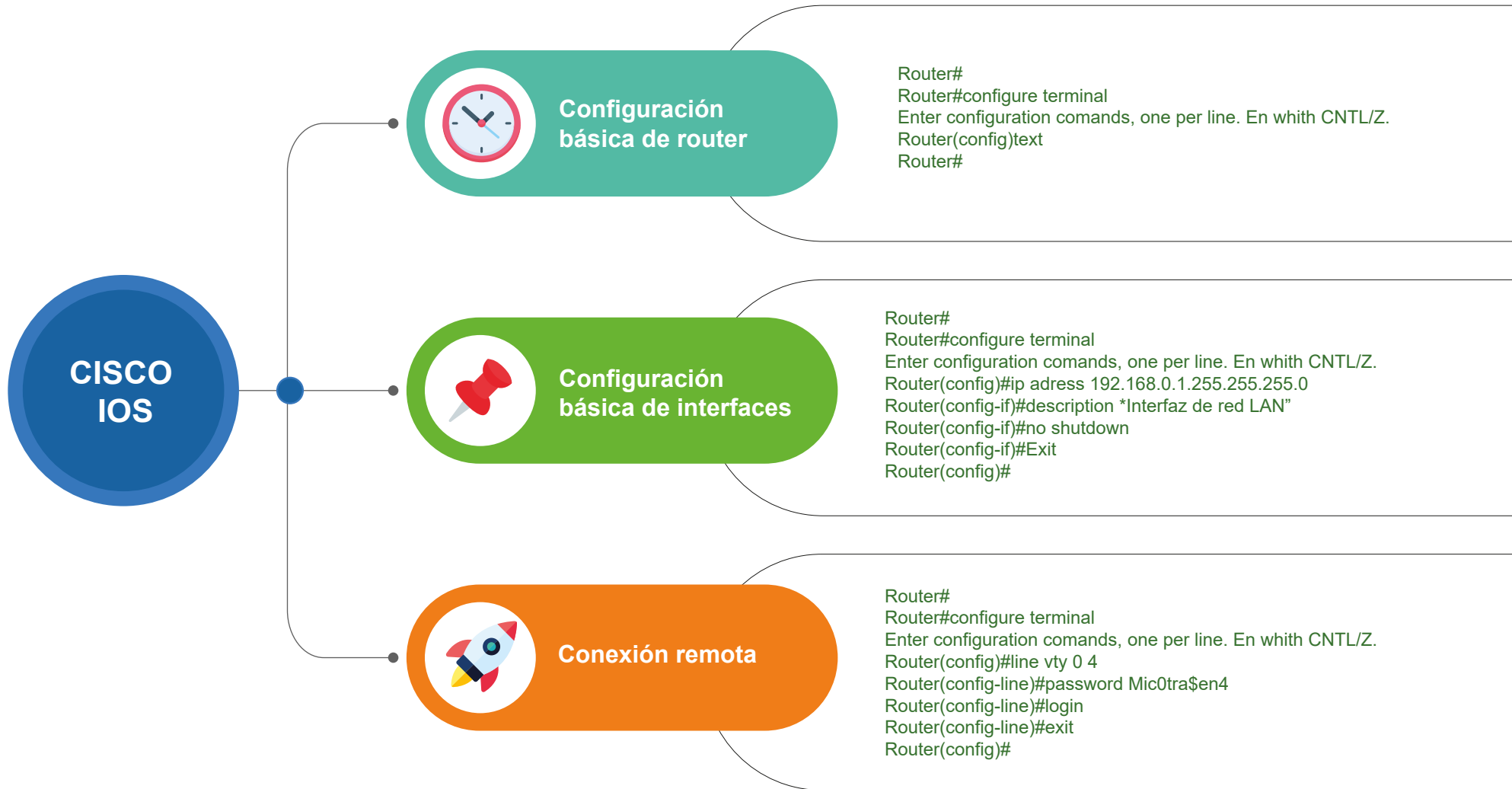


Configuración de un router



```
Router#  
Router#configure terminal  
Enter configuration comands, one per line. En whith CNTL/Z.  
Router(config)#text  
Router#
```

```
Router#  
Router#configure terminal  
Enter configuration comands, one per line. En whith CNTL/Z.  
Router(config)#ip adress 192.168.0.1.255.255.255.0  
Router(config-if)#description *Interfaz de red LAN"  
Router(config-if)#no shutdown  
Router(config-if)#Exit  
Router(config)#
```

```
Router#  
Router#configure terminal  
Enter configuration comands, one per line. En whith CNTL/Z.  
Router(config)#line vty 0 4  
Router(config-line)#password Mic0tra$en4  
Router(config-line)#login  
Router(config-line)#exit  
Router(config)#
```